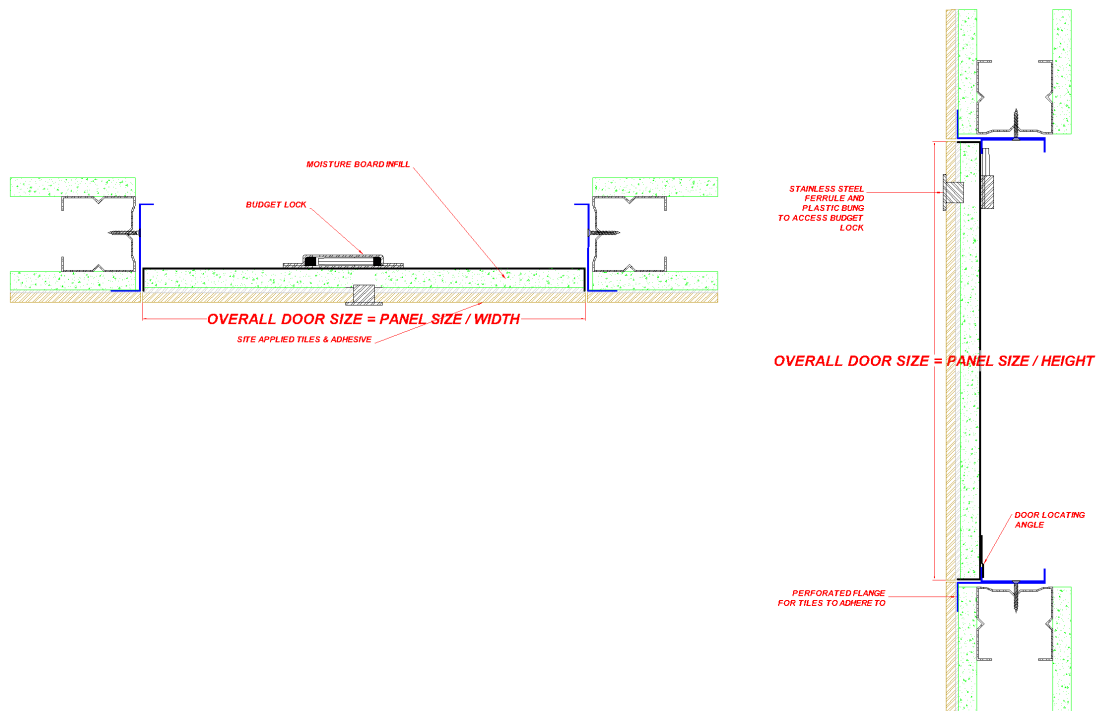
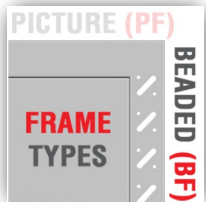


WALL  
ONLY

# PAL14-000-TD-BF-BL

The Palco PAL14-000-TD-BF-BL Ceramic Tile Door range of Access Panels are simple to install and suitable for walls only where regular maintenance to services is required.



## Description

The PAL14-000-TD-BF-BL tile door range of Access Panels are simple to install and suitable for walls only allowing easy access where regular maintenance to services is required. This panel is designed to fit into a structural membrane of a joint-less plasterboard wall system. It is manufactured with an beaded frame detail. The panel has a Moisture board faced door for applying ceramic tiles. The panels door leaf is locked in place via a Budget Lock & Safety Catch to prevent the door falling on opening as standard other lock options are available upon request. The Panel is Powder Coated RAL 9010 30% Gloss. Other colours available upon request.

## Tests

The Panel is Non Fire rated.  
The Panel is Non acoustic rated.  
The Panel is Non Air Pressure tested.

## Composition & Manufacture

The PAL14-000-TD-BF-BL is manufactured from Zintec Steel with a 0.9mm thick Door and a 0.9mm thick Frame. The panels door leaf is a lift out type with a fully removable door leaf located on a locating angle. The door is hung on the horizontal dimension. This panel is available up to 600x600mm in a wall application.

## Fitting

Make sure the structural opening is at least 7mm larger than the back of frame size. E.G a 600x600mm back of frame size requires a 607x607mm hole size. Remove the door from the frame and place the frame into the set hole. Fix through the appropriate fixing holes within the frame ensuring the frame is pushed up against the structural opening surround. Check the frame is square by measuring corner to corner. Refit door and lock in place; the door and frame should be flush. Independent bracing or support may be required to take the weight of the Access Panel. When tiling, ensure the tiles do not overhang the frame or door as this will cause damage to the tiles.