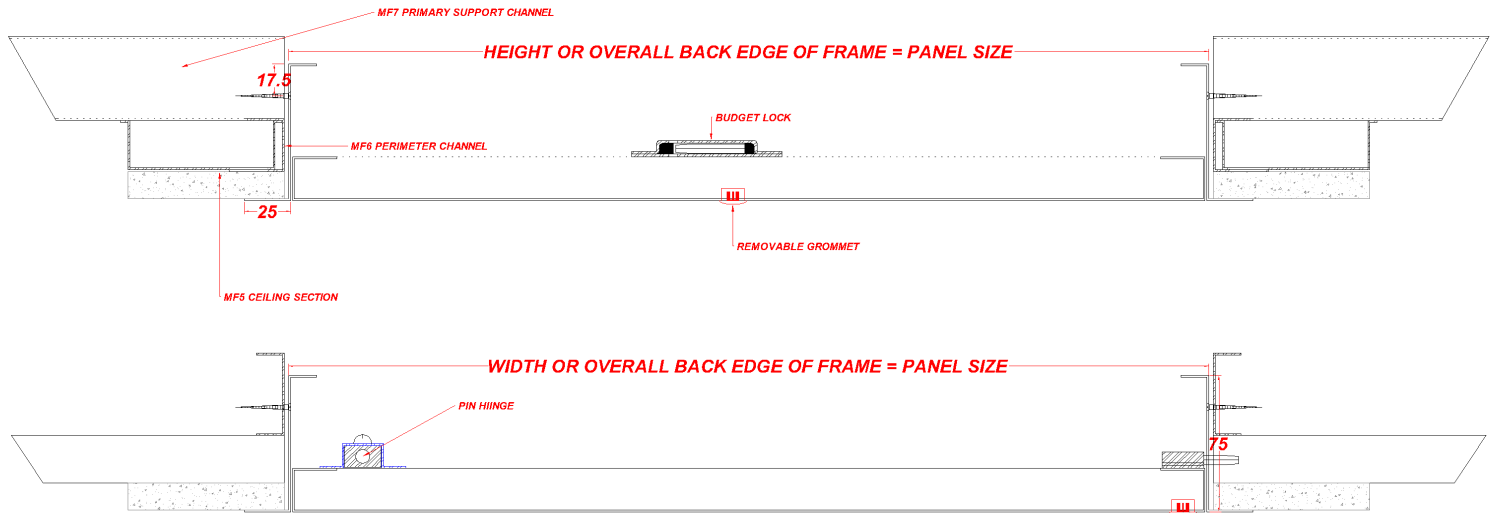
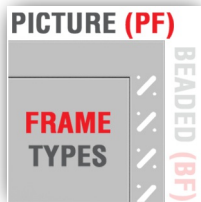


CEILING  
ONLY

# PAL05-000-MD-PF-BL

The Palco PAL05-000-MD-PF-BL range of Access Panels are simple to install and suitable for ceilings allowing easy access where regular maintenance to services is required.



## Description

This panel is designed to fit into a structural membrane of a joint-less plasterboard ceiling system. It is manufactured with a 25mm wide picture frame. The panel has a Metal Faced Door. The panels door leaf is locked in place via a Budget Lock as standard other lock options are available upon request. The Panel is Powder Coated RAL 9010 30% Gloss. Other colours available upon request.

## Tests

The Panel is Non Fire rated  
The Panel is non Acoustic rated.  
The Panel is non Air Pressure tested.  
The Panel is not Smoke Tested.

## Seals

Draught Seals **NO** Smoke Seals **NO** Air Seals **NO** Acoustic Seals **NO** Intumescent Seals **NO**

## Construction

The PAL05-000-MD-PF-BL is manufactured from Zintec Steel with a 0.9mm thick Door and a 1.2mm thick Frame. The panels door leaf is hinged by a Pin hinge system. This panel is available up to 1200x1000mm in a ceiling application as a single door unit.

## Fitting

Make sure the structural opening is at least 7mm larger than the panel size, back of frame size. E.G a 600x600mm panel size requires a 607x607mm hole size. Remove the door from the frame and place the frame into the set hole. Fix through the appropriate fixing holes within the frame ensuring the frame is pushed up against the structural opening surround. Check the frame is square by measuring corner to corner. Refit door and lock in place; the door and frame should be flush. Independent bracing or support may be required to take the weight of the Access Panel.